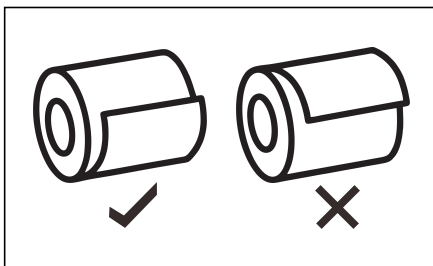


# **Thermal Receipt Printer**

## **User Manual**

Remove the used roll paper core if any, and insert the roll paper. The correct direction of the paper is shown in the illustration below.



### **Self-Test Page:**

Turn off the power first.

Keep press the "Feed" button don't loose and in the meantime turn on the power. The test page will print automatically and then can loose the "Feed" button.

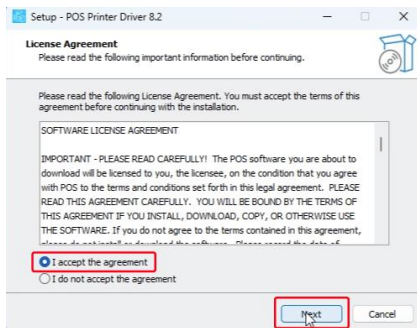
If need to print normal paper, please restart the printer and then can in normal working status.

## Driver Installation for Windows by USB Connection

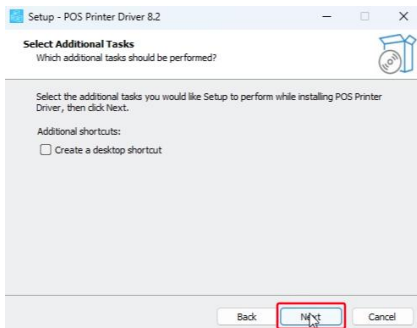
1. Connect with Windows via USB cable, turn on the power of printer.
2. Double click the "POS Printer Driver Setup V8.2".



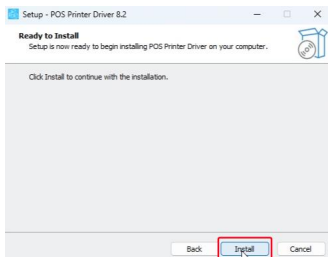
3. Choose the "Accept" and click the "Next".



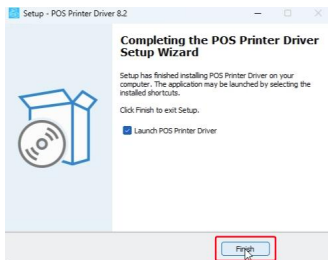
4. Click the "Next".



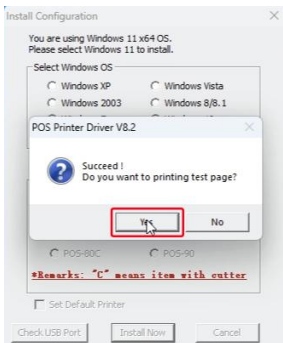
5. Click the "Install".



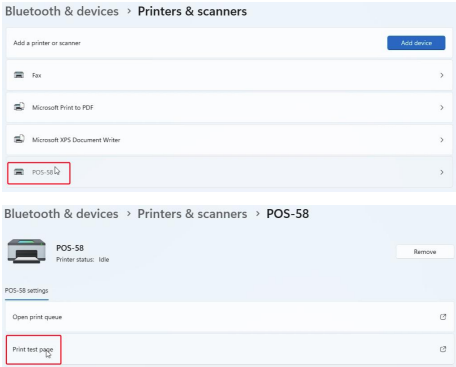
6. Click the "Finish".



7. Choose the "POS-58". Click the "Install Now". Click the "Yes".



8.Installation Sucessful! You could print the test page now.

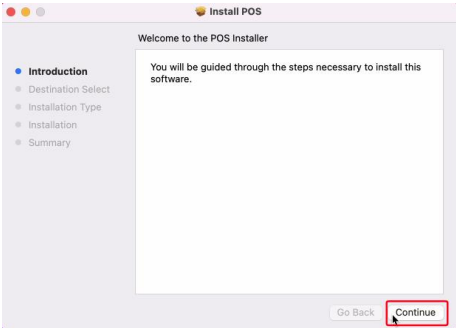


**Driver Installation for Mac by USB Connection**

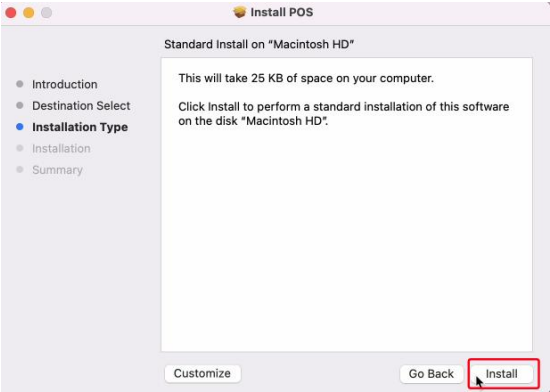
- 1.Connect with Mac via USB cable, turn on the power of printer.
- 2.Double click the "POS1.8.pkg".



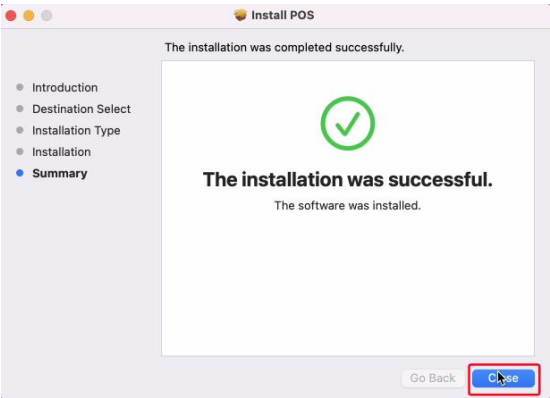
- 3.Double click the "Continue ".



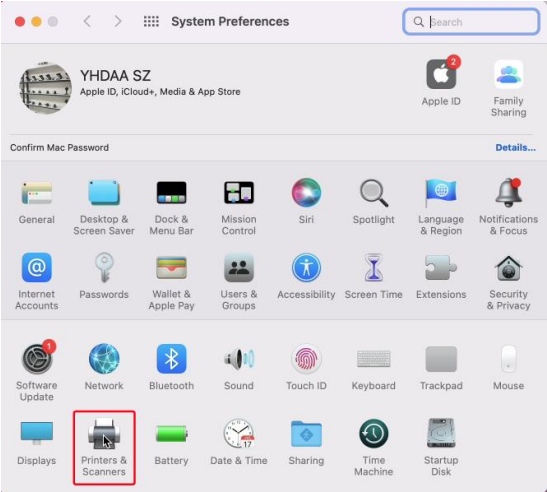
4.Double click the "Install "and type the password(your own mac password)



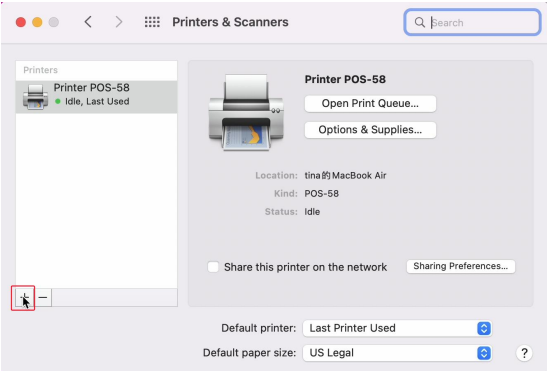
5.Click the "Close".



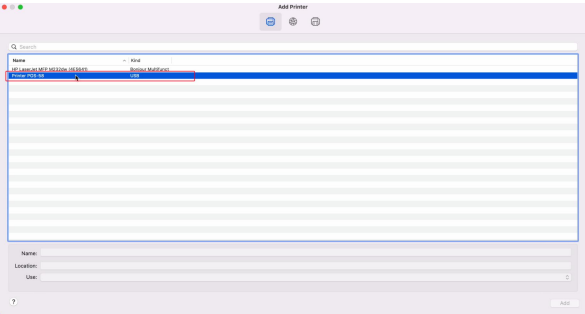
6.Choose the "System Preferences", and click the "Printers & Scanners".



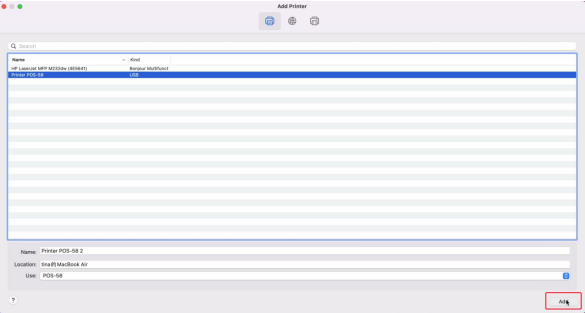
7.Click the "+".



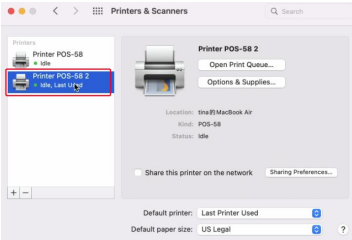
8. Click the "Printer POS-58 USB" and wait a few seconds, it will appear datas.



9. Click the "Add" and wait a few seconds, it will configure automatically.



10. Installation Successful.



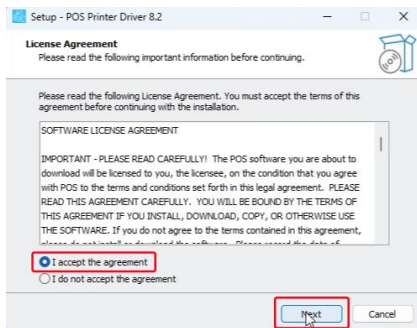


## Driver Installation for Windows by Bluetooth Connection

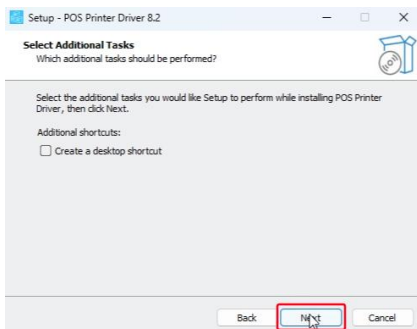
1. Turn on the power of printer.
2. Double click the "POS Printer Driver Setup V8.2".



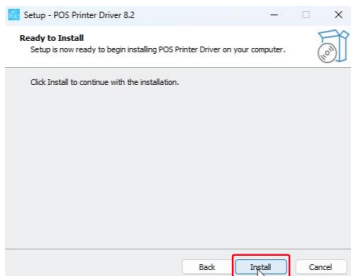
3. Choose the "Accept" and click the "Next".



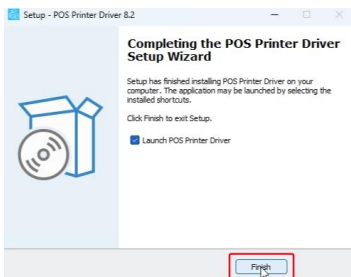
4. Click the "Next".



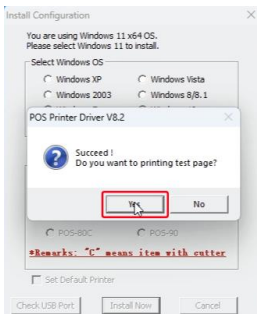
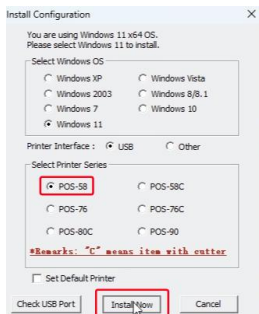
5. Click the "Install".



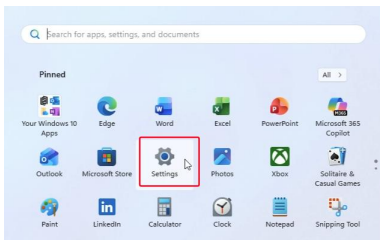
6. Click the "Finish".



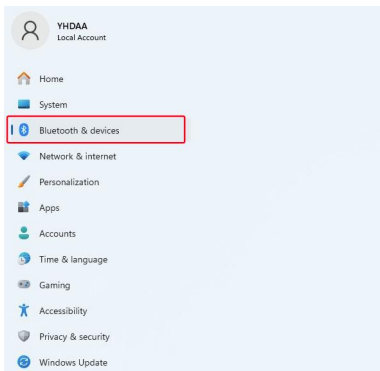
7. Choose the "POS-58". Click the "Install Now". Click the "Yes".



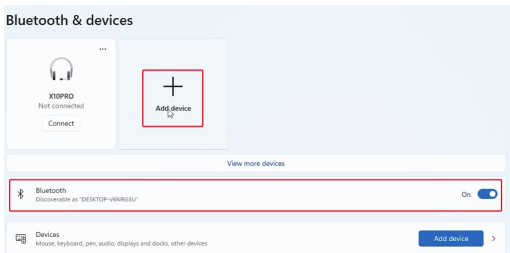
8. Click the Windows and then click the setting.



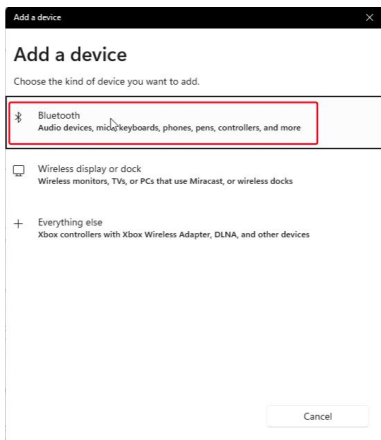
9. Click the "Bluetooth & devices".



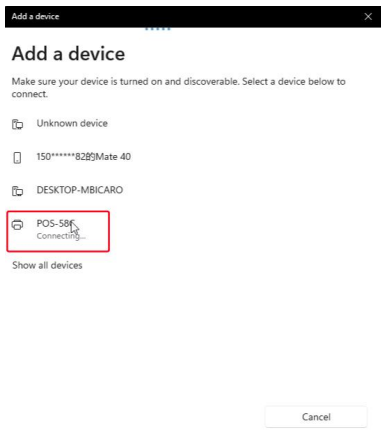
10. Turn on the Bluetooth. Click the "+".



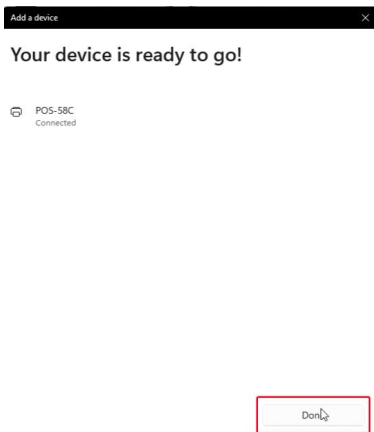
11. Click the bluetooth.



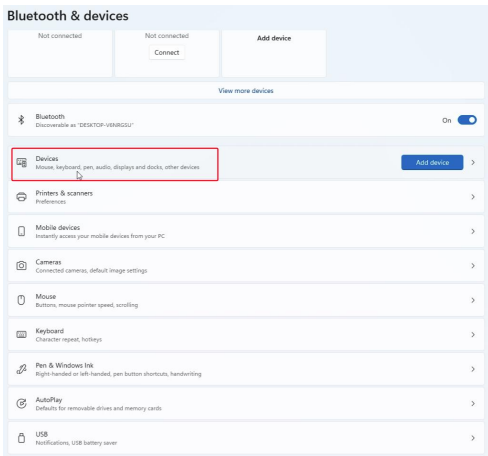
12. Choose the "POS-58C".



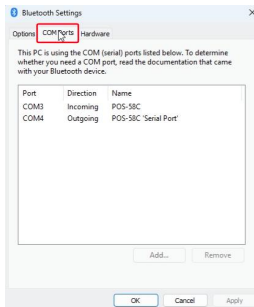
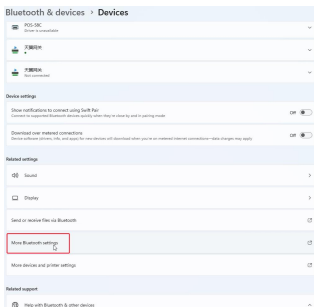
### 13. Bluetooth connect Successful.



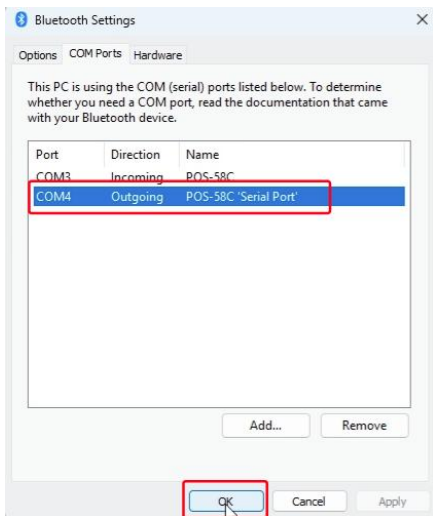
### 14. Click the "Devices".



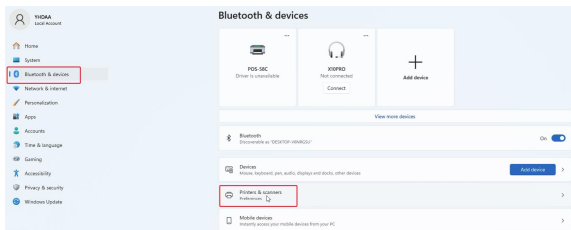
15. Click the "more Bluetooth settings". Click the "COM ports".



16. Check which one is outgoing port, for example now is COM4, we need to use this port later, just remember this port. Click the "OK".



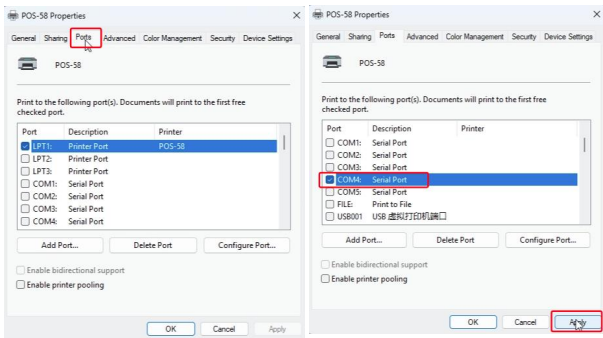
17. Click the "Bluetooth & devices". Click the "Printers & scanners".



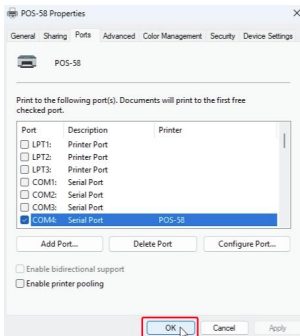
18. Click the "POS-58". Click the "Printer properties".



19. Click the "Ports". Choose the "COM4". Click the "Apply".



20. Click the "OK".



21. Installation Successful! You could print the test page now.

